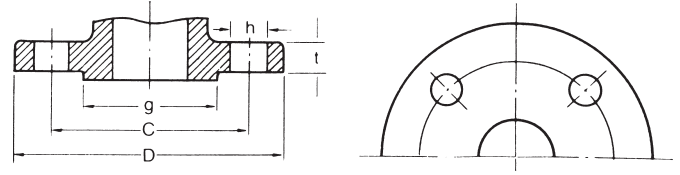


Steel Pipe Flange Dimensions

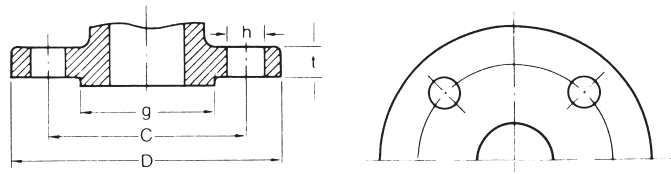
ANSI Class 600 RF, Class 900 RF



Class 600 steel pipe flange dimensions

Nominal Size		D		C		g		t		(h) Bolt hole		Bolt	
in	mm	in	mm	in	mm	in	mm	in	mm	in	mm	Number	Diam
1/2	15	3.75	95	2.62	66.5	1.38	35	0.56	14.3	0.62	16	4	1/2
3/4	20	4.62	117	3.25	82.5	1.69	43	0.62	15.9	0.75	19	4	5/8
1	25	4.88	124	3.50	89.0	2.00	51	0.69	17.5	0.75	19	4	5/8
1 1/4	32	5.25	133	3.88	98.5	2.50	64	0.81	20.7	0.75	19	4	5/8
1 1/2	40	6.12	156	4.50	114.5	2.88	73	0.88	22.3	0.88	22	4	3/4
2	50	6.50	165	5.00	127.0	3.62	92	1.00	25.4	0.75	19	8	5/8
2 1/2	65	7.50	190	5.88	149.0	4.12	105	1.12	28.6	0.88	22	8	3/4
3	80	8.25	210	6.62	168.0	5.00	127	1.25	31.8	0.88	22	8	3/4
4	100	10.75	273	8.50	216.0	6.19	157	1.50	38.1	1.00	25	8	7/8
5	125	13.00	330	10.50	266.5	7.31	186	1.75	44.5	1.12	29	8	1
6	150	14.00	356	11.50	292.0	8.50	216	1.88	47.7	1.12	29	12	1
8	200	16.50	419	13.75	349.0	10.62	270	2.19	55.6	1.25	32	12	1 1/8
10	250	20.00	508	17.00	432.0	12.75	324	2.50	63.5	1.38	35	16	1 1/4
12	300	22.00	559	19.25	489.0	15.00	381	2.62	66.7	1.38	35	20	1 1/4
14	350	23.75	603	20.75	527.0	16.25	413	2.75	69.9	1.50	38	20	1 3/8
16	400	27.00	686	23.75	603.0	18.50	470	3.00	76.2	1.62	41	20	1 1/2
18	450	29.25	743	25.75	654.0	21.00	533	3.25	82.6	1.75	45	20	1 5/8
20	500	32.00	813	28.50	724.0	23.00	584	3.50	88.9	1.75	45	24	1 5/8
24	600	37.00	940	33.00	838.0	27.25	692	4.00	101.6	2.00	51	24	1 7/8

Height of raised face is 0.25 inch (6.4mm)each.



Class 900 steel pipe flange dimensions

Nominal Size		D		C		g		t		(h) Bolt hole		Bolt	
in	mm	in	mm	in	mm	in	mm	in	mm	in	mm	Number	Diam
1/2 to 2 1/2	15 to 65	Use class 1500 dimensions in these sizes											
3	80	9.50	241	7.50	190.5	5.00	127	1.50	38.1	1.00	25	8	7/8
4	100	11.50	292	9.25	235.0	6.19	157	1.75	44.5	1.25	32	8	1 1/8
5	125	13.75	349	11.00	279.5	7.31	186	2.00	50.8	1.38	35	8	1 1/4
6	150	15.00	381	12.50	317.5	8.50	216	2.19	55.7	1.25	32	12	1 1/8
8	200	18.50	470	15.50	393.5	10.62	270	2.50	63.5	1.50	38	12	1 3/8
10	250	21.50	546	18.50	470.0	12.75	324	2.75	69.9	1.50	38	16	1 3/8
12	300	24.00	610	21.00	533.5	15.00	381	3.12	79.3	1.50	38	20	1 3/8
14	350	25.25	641	22.00	559.0	16.25	413	3.38	85.9	1.62	41	20	1 1/2
16	400	27.75	705	24.25	616.0	18.50	470	3.50	88.9	1.75	45	20	1 5/8
18	450	31.00	787	27.00	686.0	21.00	533	4.00	101.6	2.00	51	20	1 7/8
20	500	33.75	857	29.50	749.5	23.00	584	4.25	108.0	2.12	54	20	2
24	600	41.00	1041	35.50	901.5	27.25	692	5.50	139.7	2.62	67	20	2 1/2

Height of raised face is 0.25 inch (6.4mm)each.